

C O R E S I H A N G A R

ROMANIA | BRAȘOV

O F T A B L E C O N T E N T S

• HISTORY •

• NOWADAYS •

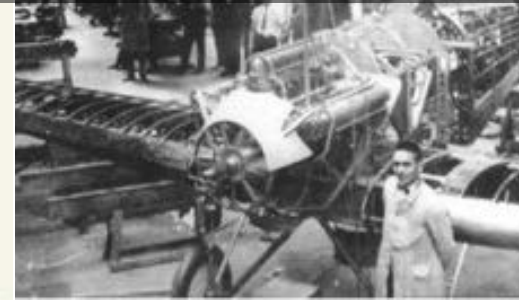
• GENERAL CONCEPT •

• ARCHITECTURAL CONCEPT •

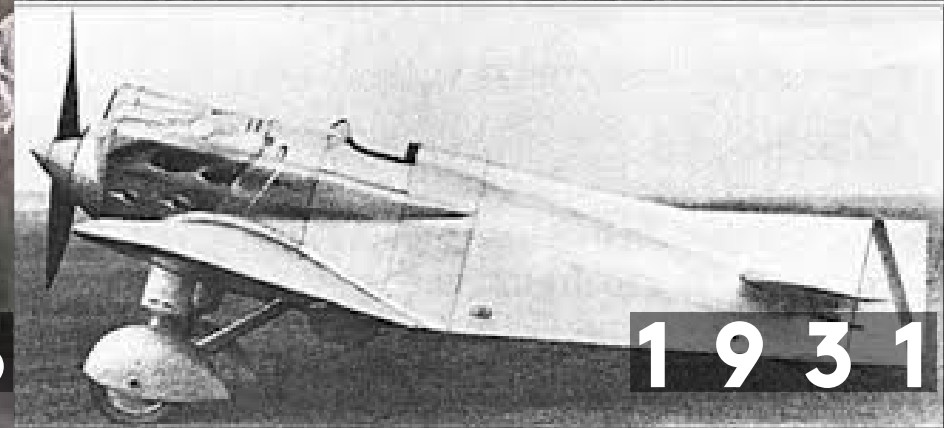
• KEY FIGURES •

• SKETCHES •

CORESI HANGAR RICH HISTORY



1928



1931



1939



1932



CORESI HANGAR | NOWADAYS

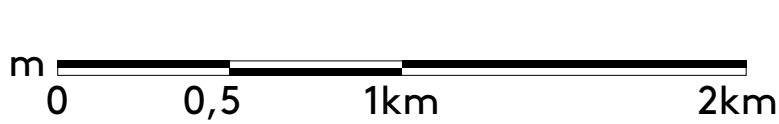
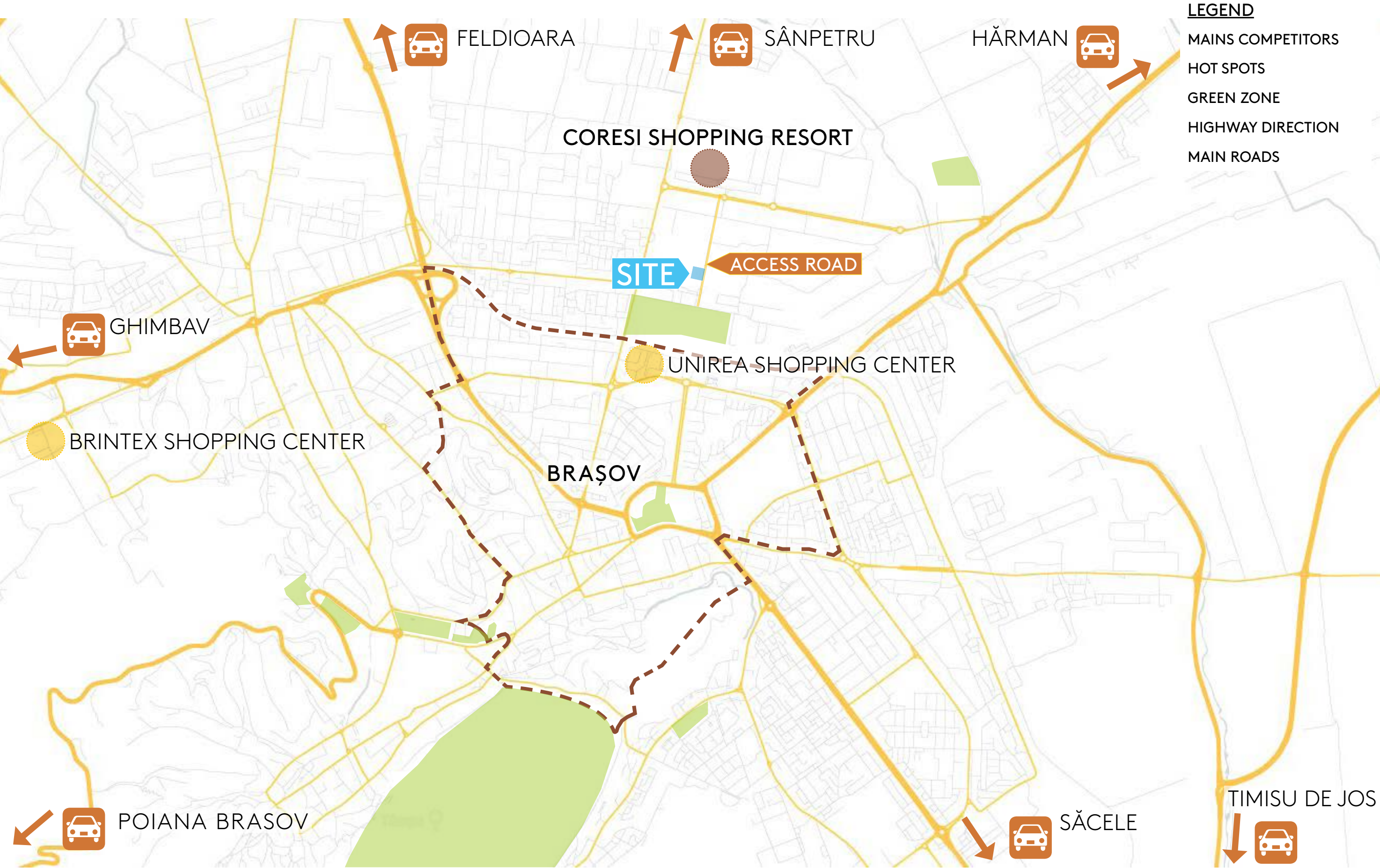


SITUATION

SITUATION IN ROMANIA • CITY IN THE REGION



SITUATION | GENERAL LOCATION



SITUATION | DETAILED LOCATION

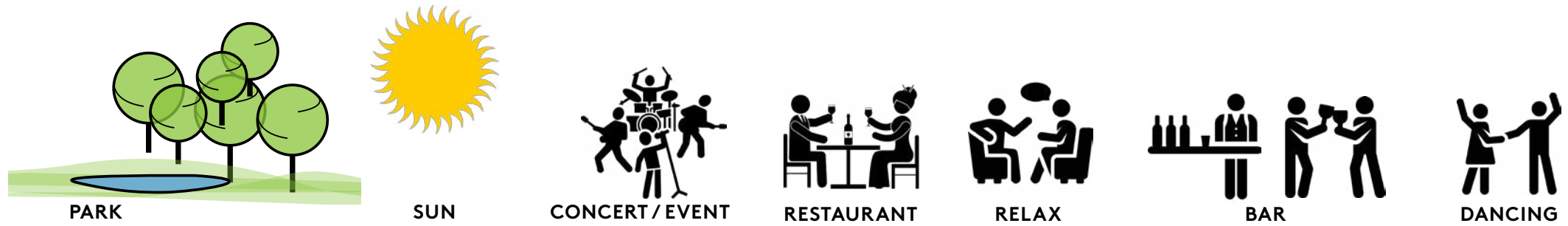


GENERAL CONCEPT

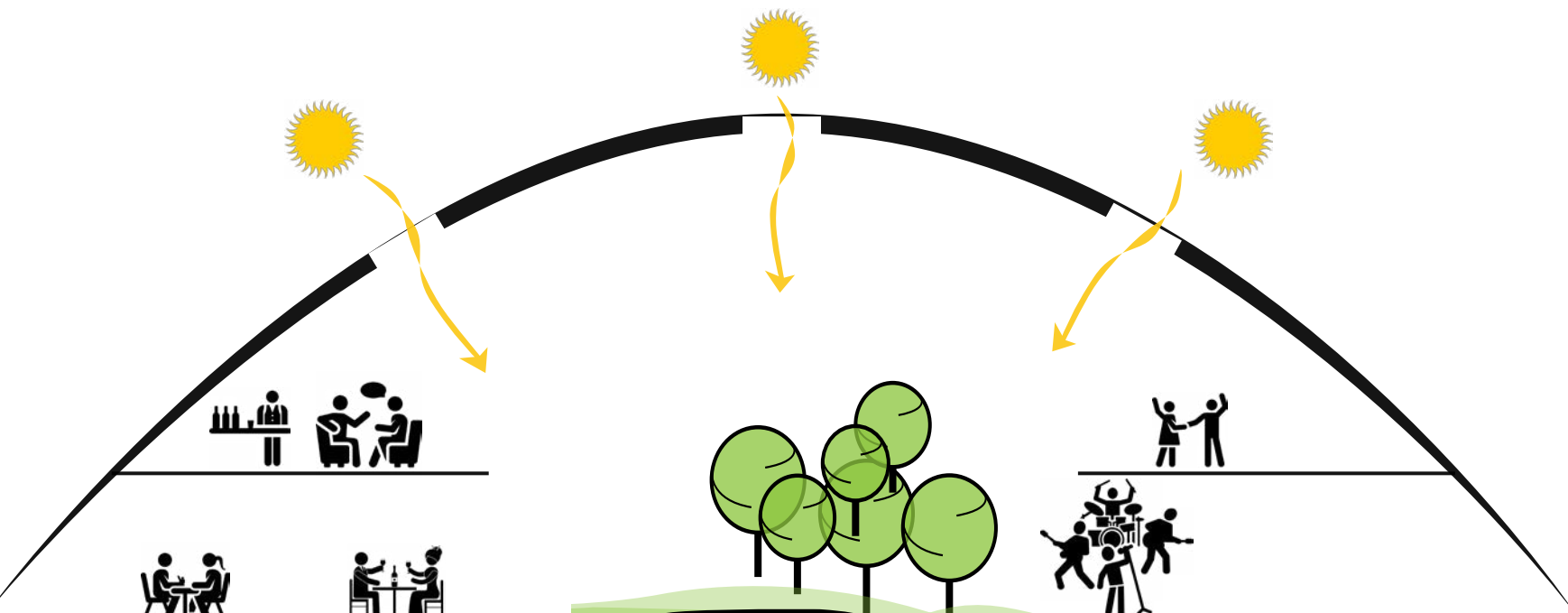
I D E A | F U N C T I O N S

THE PLACE

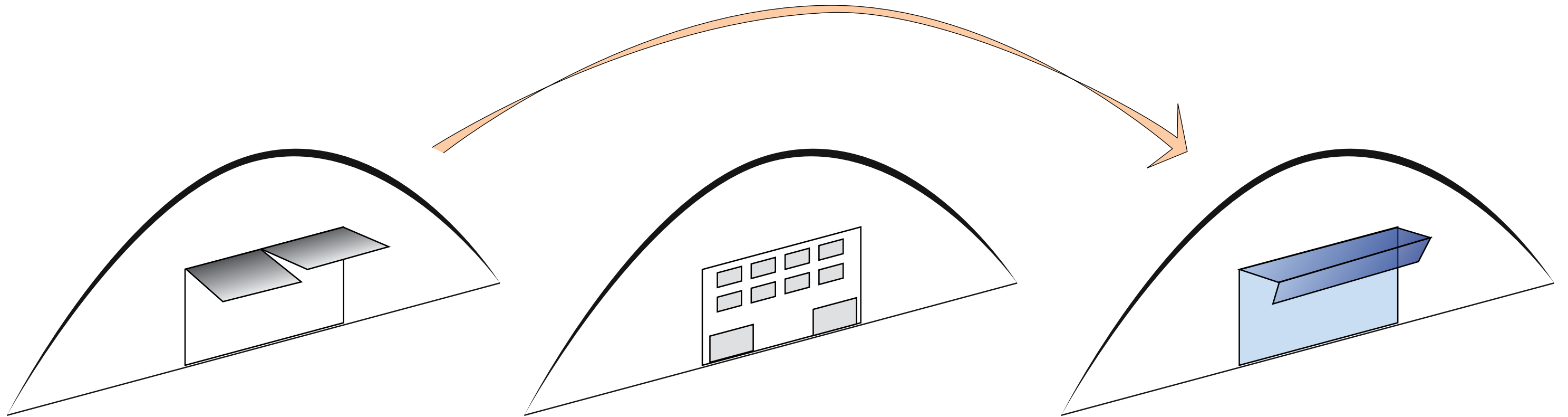
THE NEEDS



CORESI HANGAR



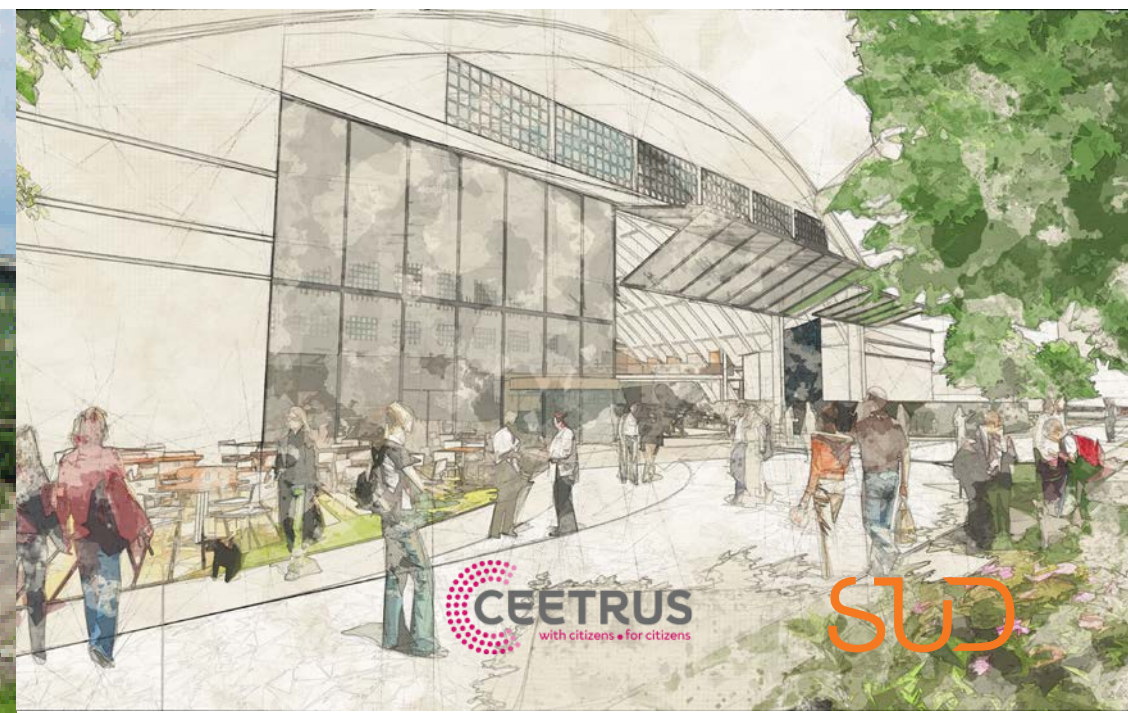
I D E A I F A C A D E



YESTERDAY

TODAY

TOMMOROW !



C O R E S I H A N G A R

I R E F E R E N C E S



C O N C E R T S



B A R S



T H E G A T E



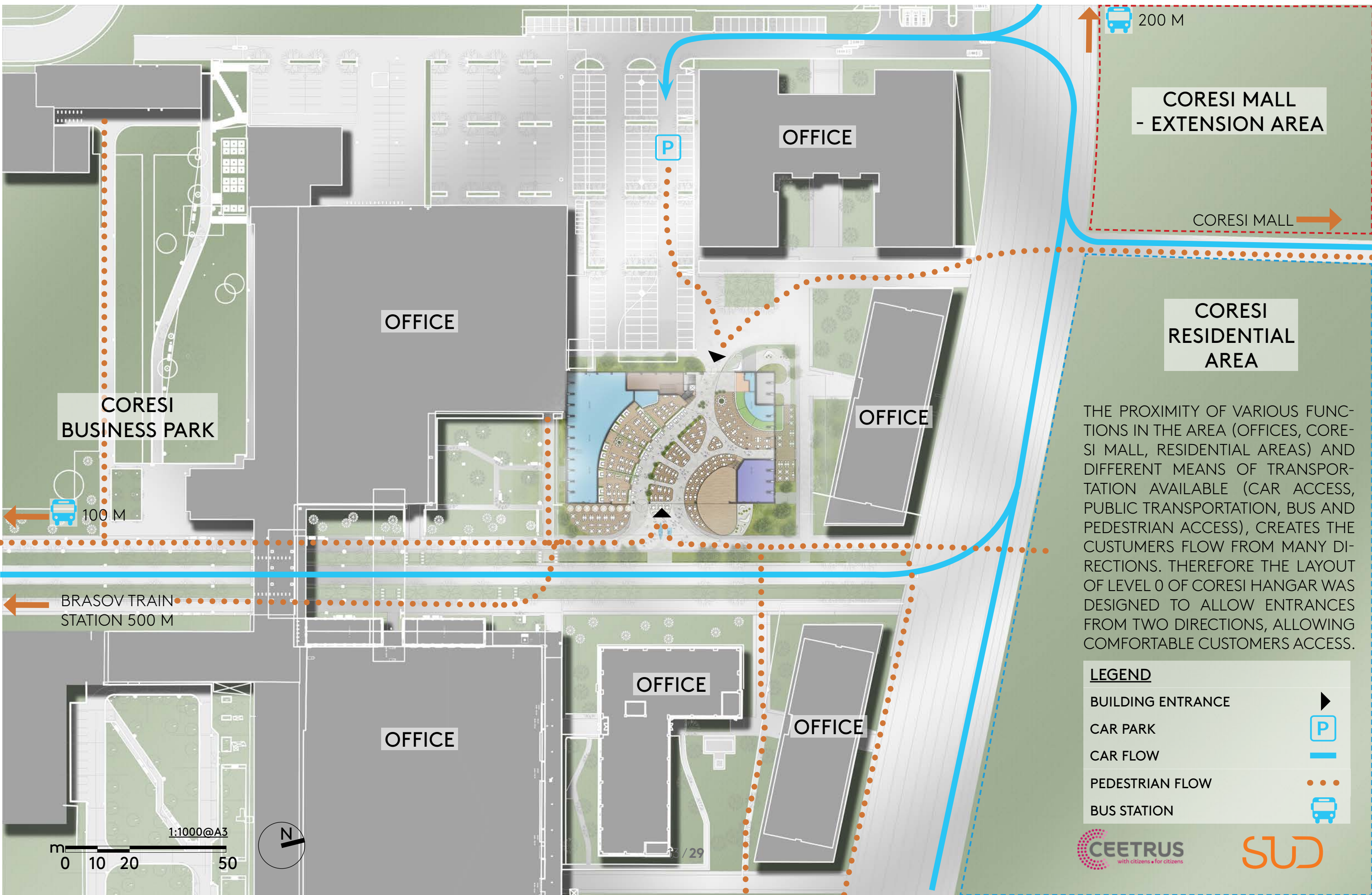
F O O D
H A L L



E V E N T S

ARCHITECTURAL CONCEPT

CORESI HANGAR | MASTER PLAN



THE PROXIMITY OF VARIOUS FUNCTIONS IN THE AREA (OFFICES, CORESI MALL, RESIDENTIAL AREAS) AND DIFFERENT MEANS OF TRANSPORTATION AVAILABLE (CAR ACCESS, PUBLIC TRANSPORTATION, BUS AND PEDESTRIAN ACCESS), CREATES THE CUSTOMERS FLOW FROM MANY DIRECTIONS. THEREFORE THE LAYOUT OF LEVEL 0 OF CORESI HANGAR WAS DESIGNED TO ALLOW ENTRANCES FROM TWO DIRECTIONS, ALLOWING COMFORTABLE CUSTOMERS ACCESS.

LEGEND

BUILDING ENTRANCE

CAR PARK

CAR FLOW

PEDESTRIAN FLOW

BUS STATION



OFFICE

OFFICE

OFFICE

OFFICE

OFFICE

CORESI MALL
- EXTENSION AREA

CORESI MALL

CORESI
RESIDENTIAL
AREA

CORESI
BUSINESS PARK

1:1000@A3

0 10 20 50



CORESI HANGAR | LEVEL 0

LEVEL 0

FOUR ENTRANCES LEAD CUSTOMERS DIRECTLY TO INTERIOR PLAZA WITH PANORAMIC LIFT, STAGE AND INTERIOR GREENERY. RESTAURANTS AND SNACK BARS WITH GARDENS ARE INTEGRAL PART OF PLAZA.



m 0 1 5 15

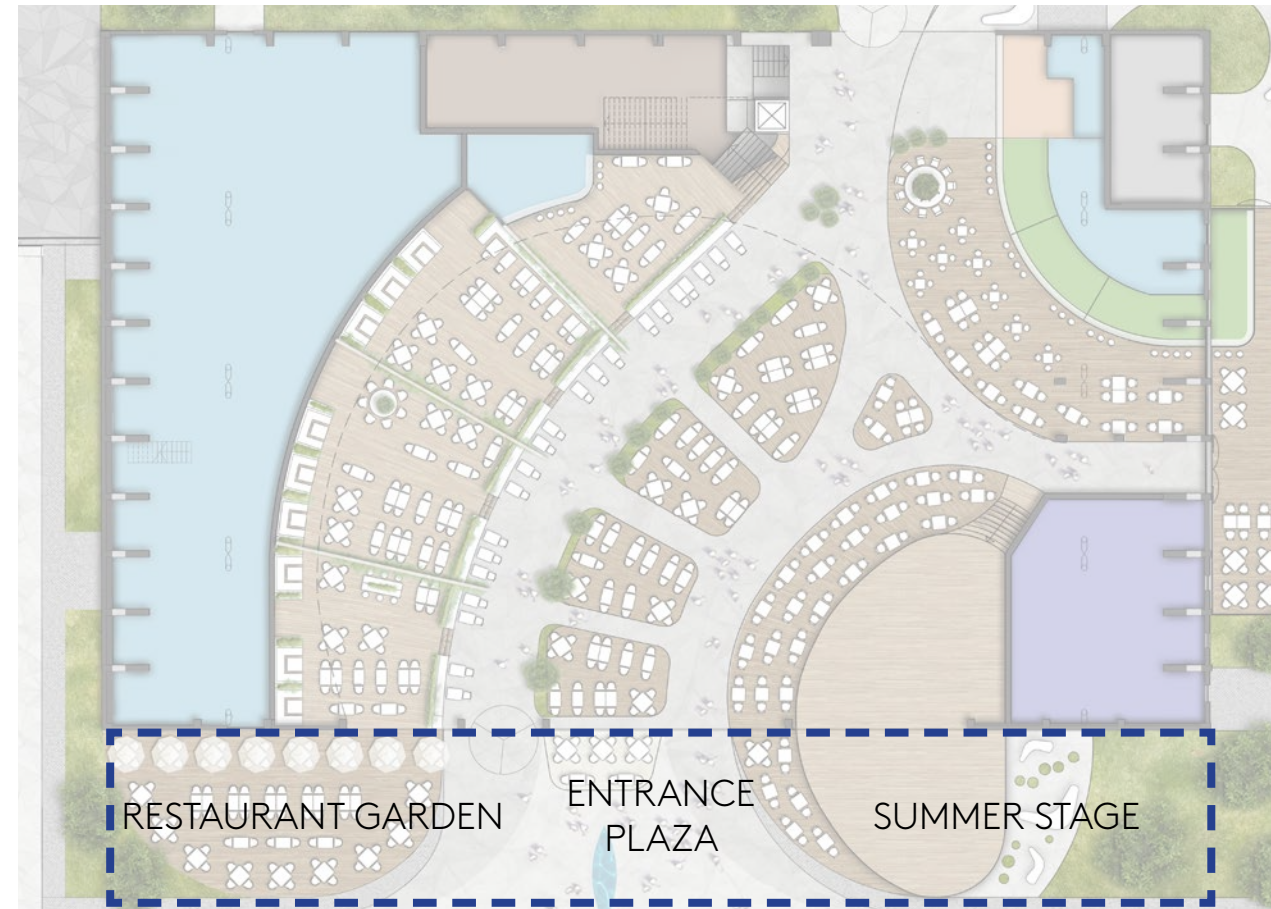
1:250@A3



LEVEL 0 | FUNCTIONS

ENTRANCE PLAZA IS A WEL-COMING SPACE WITH FOUNTAIN JETS, AND GREENERY ALONG RESTAURANT GARDENS SIDES.

HIGH GLAZED & OPENABLE FRONT FACADE OF CORESI HANGAR VISUALLY CONTINUES THE EXTERIOR PLAZA TO THE INTERIOR, CREATING ILLUSION OF ONE OPEN SPACE.



LOUNGE & DINING



RESTAURANT GARDENS



ENTRANCE PLAZA

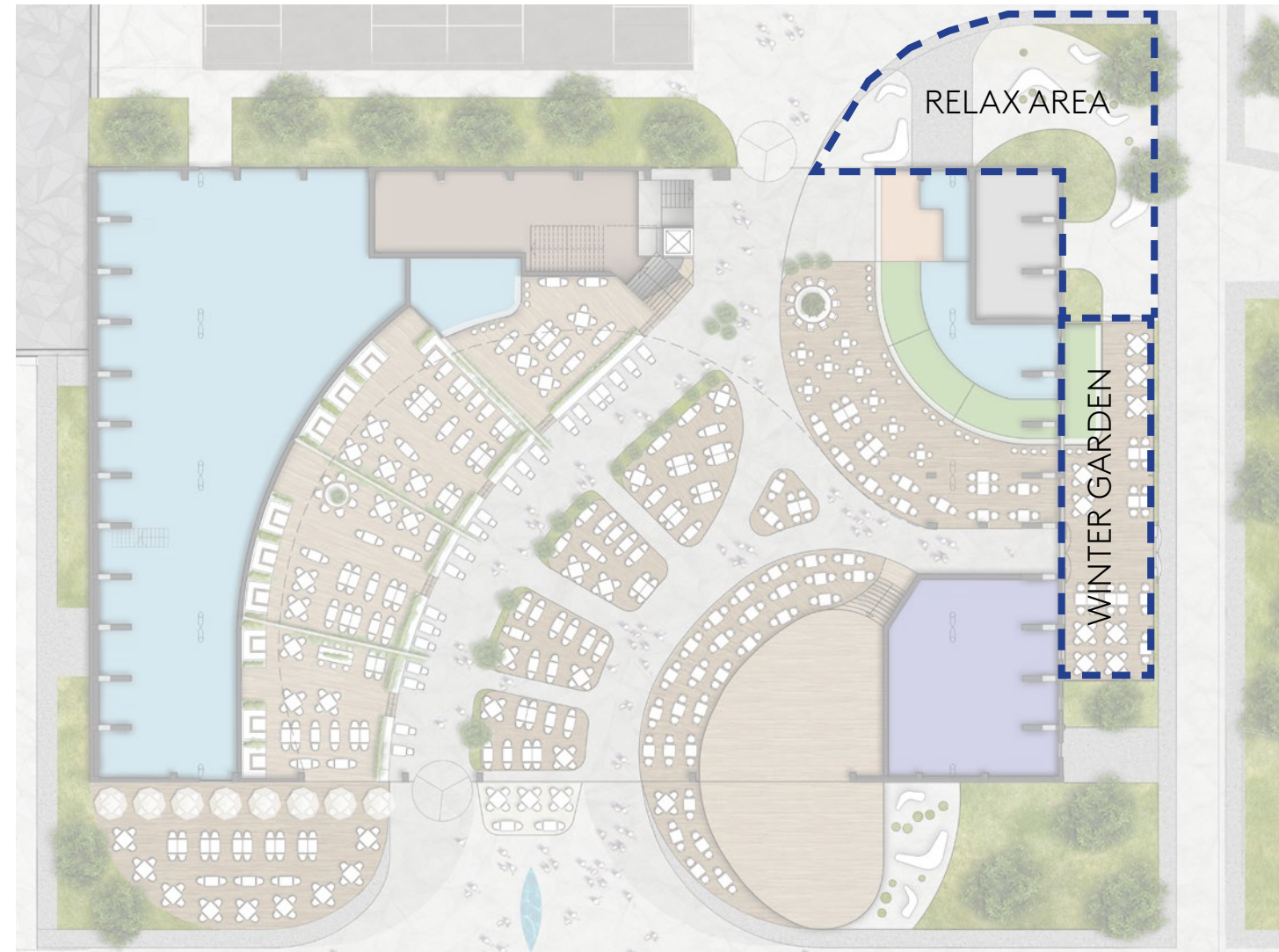


SUMMER STAGE

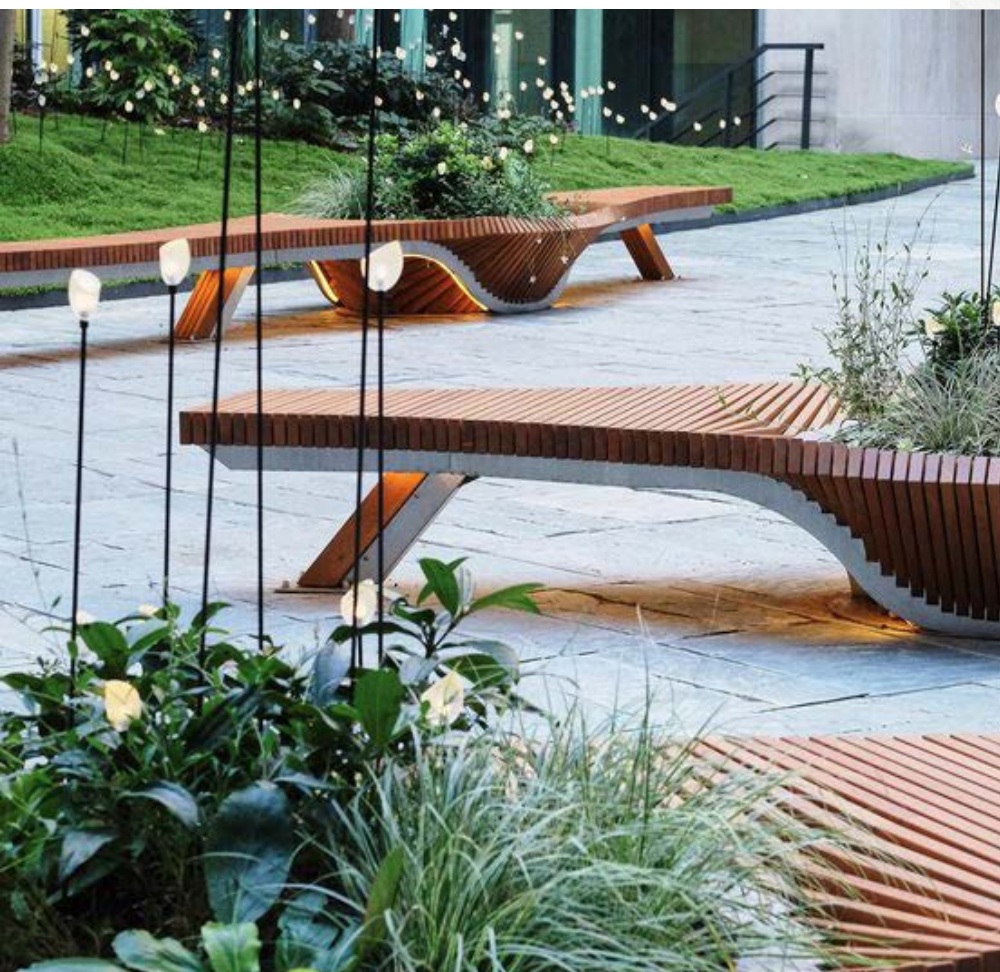
LEVEL 0 | FUNCTIONS

RELAX AREA IS A LEISURE SPACE FOR BOTH THE VISITORS AND THE EMPLOYEES OF CORESI BUSINESS CAMPUS, PROVIDING SUCH AMENITIES AS SEATS SURROUNDED BY GREENERY OR SMOKING CORNER.

WINTER GARDEN IS AN EXTENSION OF THE RESTAURANT SITTING AREA THAT CAN BE UTILISED DURING WINTER. IT IS ALSO VISIBLE FROM THE OFFICES.



RELAX AREA

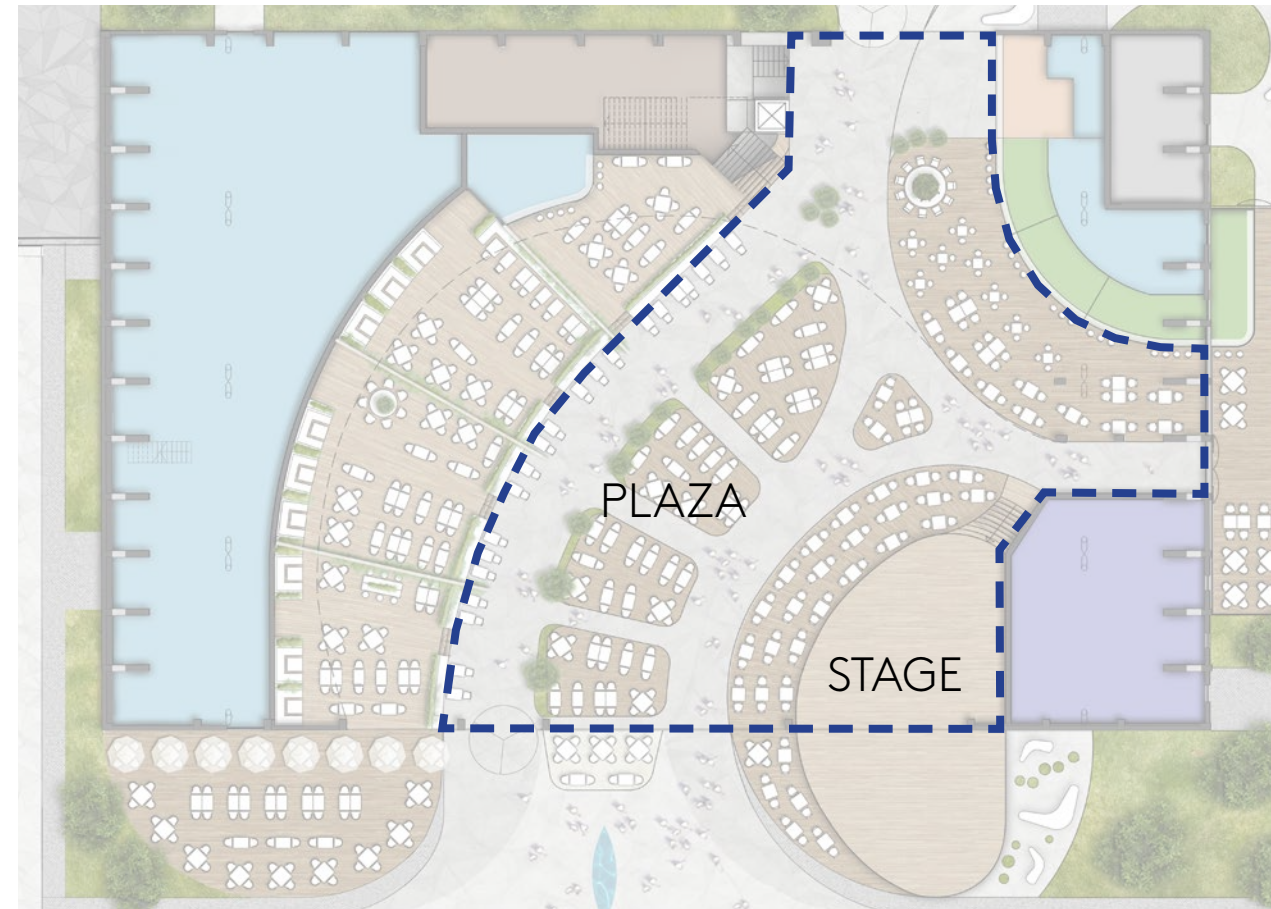


LEVEL 0 | FUNCTIONS

INTERIOR PLAZA CONTINUES THE CHARACTER OF THE EXTERIOR, ALLOWING TO CONTINUALLY ENJOY EXTERIOR FEATURES, SUCH AS RESTAURANTS AND GREENERY INSIDE THE BUILDING.

FROM PLAZA LEVEL, STAIRS AND PANORAMIC LIFT LEAD TO HIGHER LEVEL ALLOWING EASY AND CONVENIENT ACCES TO LOUNGE AREA

INTERIOR PLAZA DESIGN AND CHARACTER CREATES MANY OPPORTUNITIES FOR FUTURE USE. VARIOUS EVENT COULD BE HELD SUCH AS CONCERTS, SHOWS, TEMPORARY EXHIBITS, AND OTHER LOCAL EVENTS.



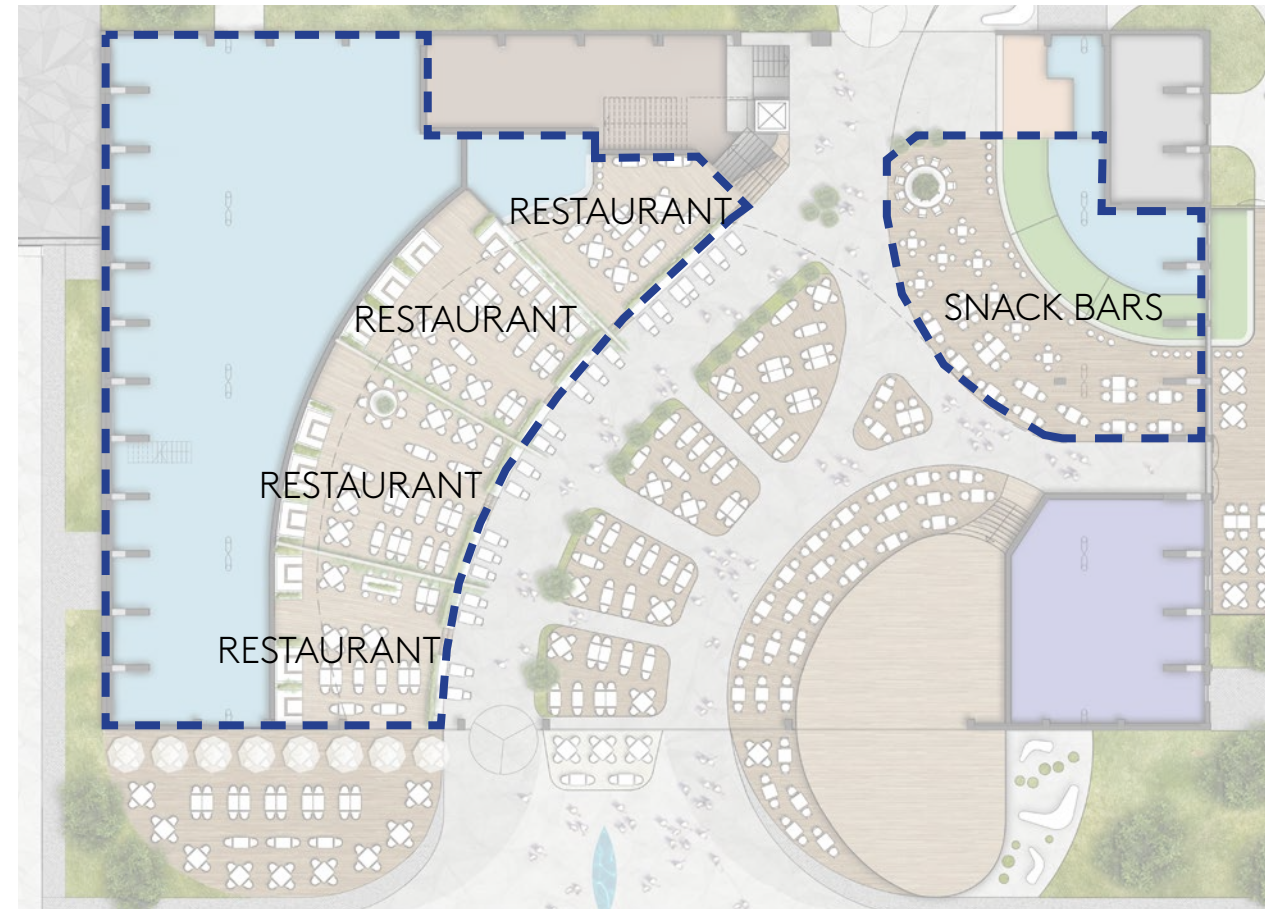
CULTURE

ENTERTAINMENT



LEVEL 0 | FUNCTIONS

RESTAURANTS AND SNACK BARS ARE LOCATED ON LEVEL 0 WITH ELEVATED SITTING AREAS ALLOWING GOOD VISIBILITY OF THE STAGE. STREET TYPE RESTAURANT SITTING AREA WITHIN PLAZA SPACE CONTRIBUTES TO THE UNIQUE CORESI HANGAR ATMOSPHERE.



LOUNGE & DINING

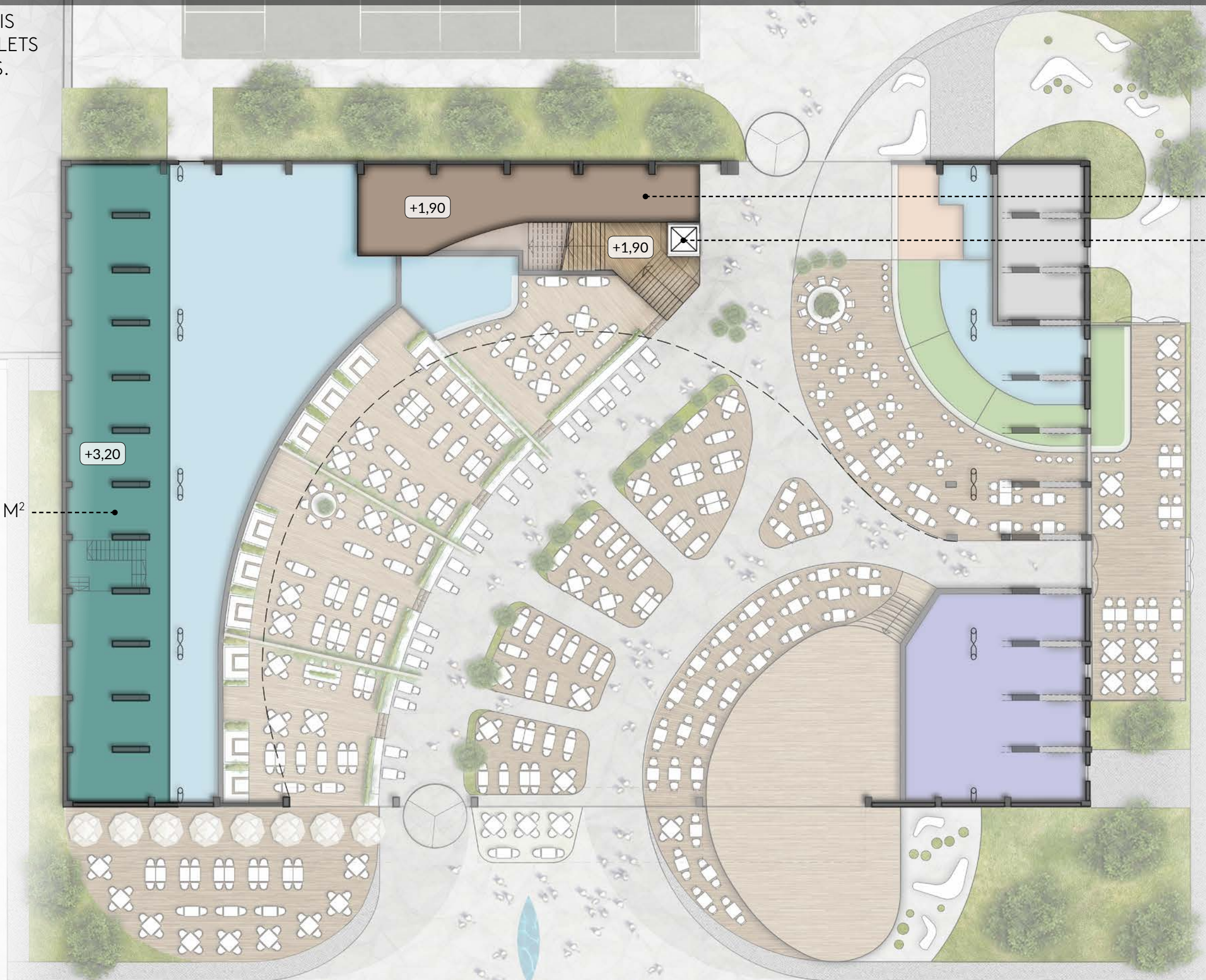


RESTAURANTS

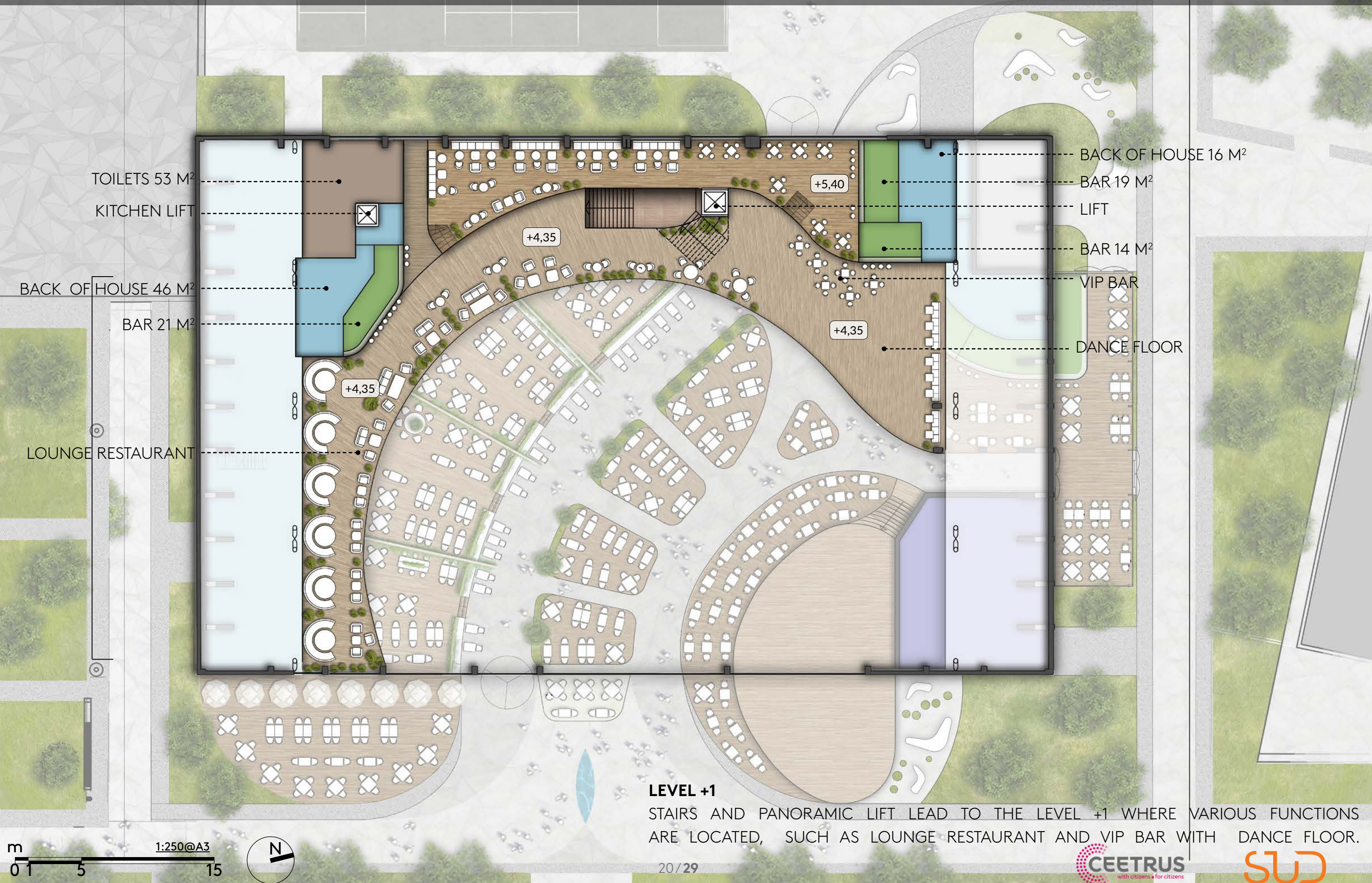
SNACK BARS

CORESI HANGAR | MEZZANINE LEVEL

MEZZANINE LEVEL IS DEDICATED FOR TOILETS AND SOCIAL SPACES.

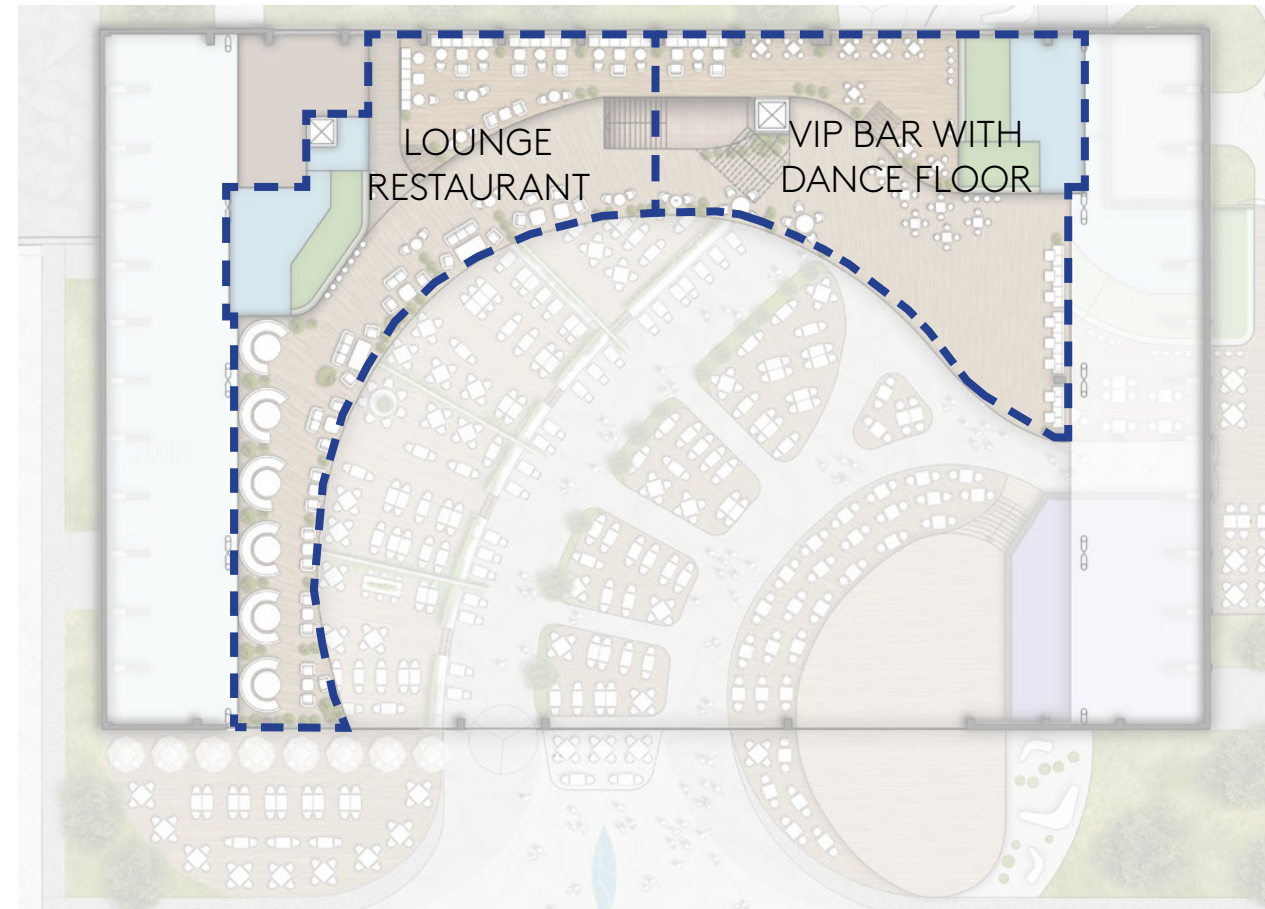


CORESI HANGAR | LEVEL + 1

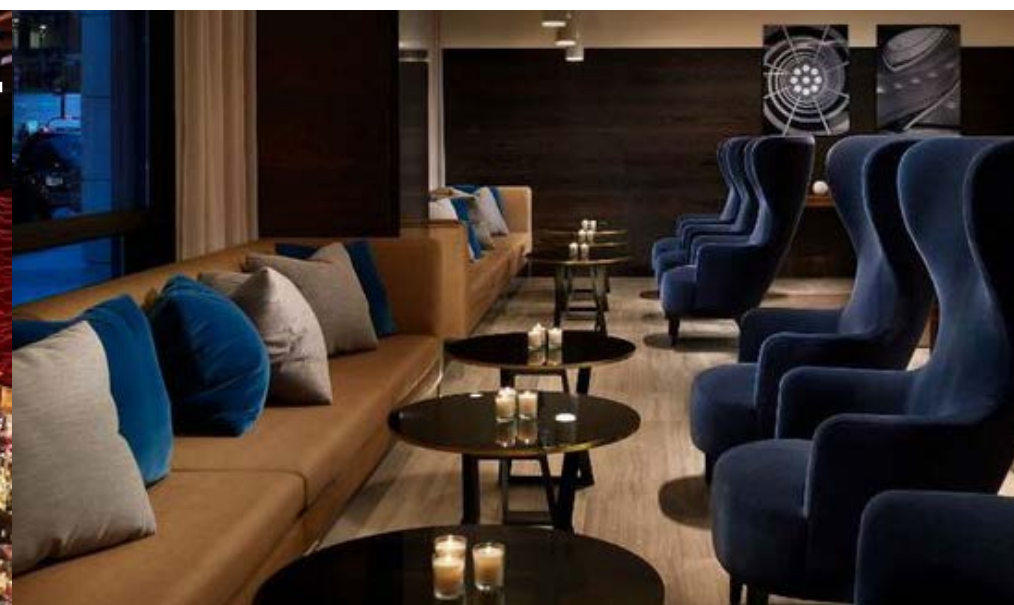


LEVEL +1 | FUNCTIONS

ON LEVEL 1 THERE IS AN AREA DEDICATED TO PREMIUM **LOUNGE RESTAURANT AND VIP BAR** WITH DANCE FLOOR.



LOUNGE & BAR

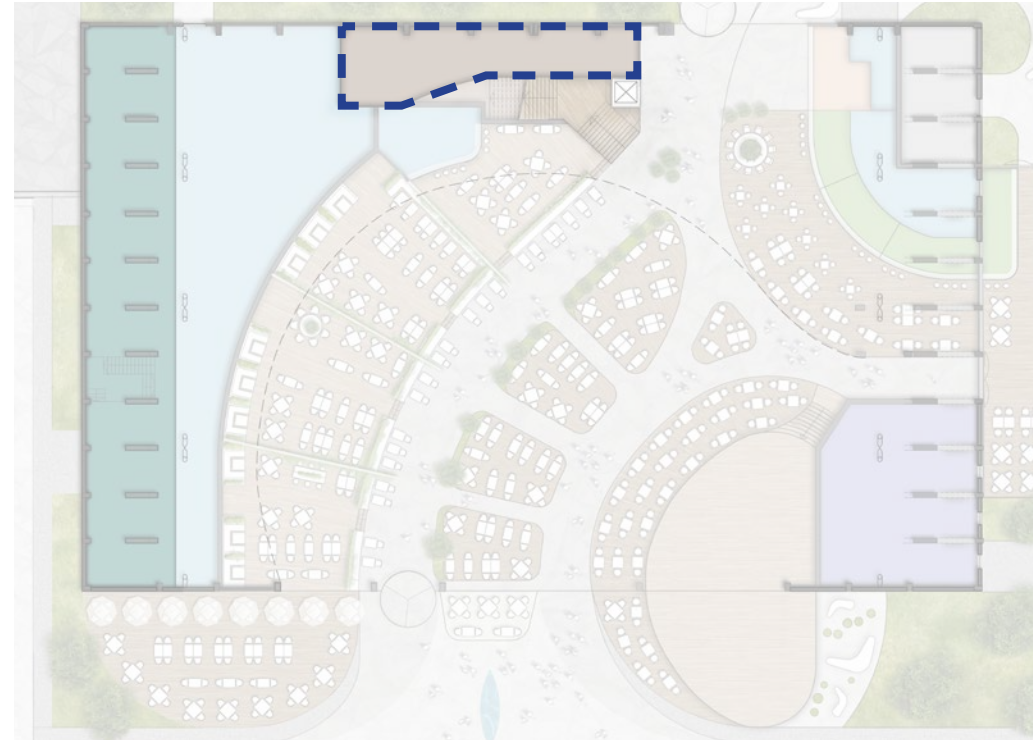


TOILETS

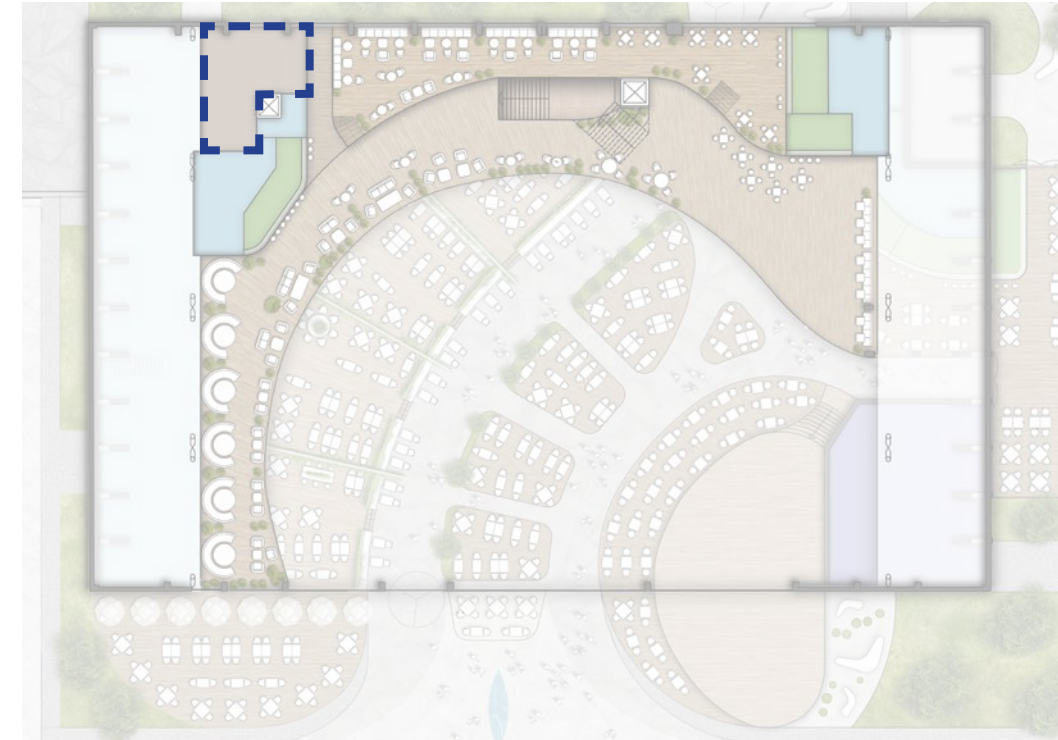
LEVEL 0



MEZZANINE LEVEL



LEVEL +1



SUD | FORUM GDAŃSK

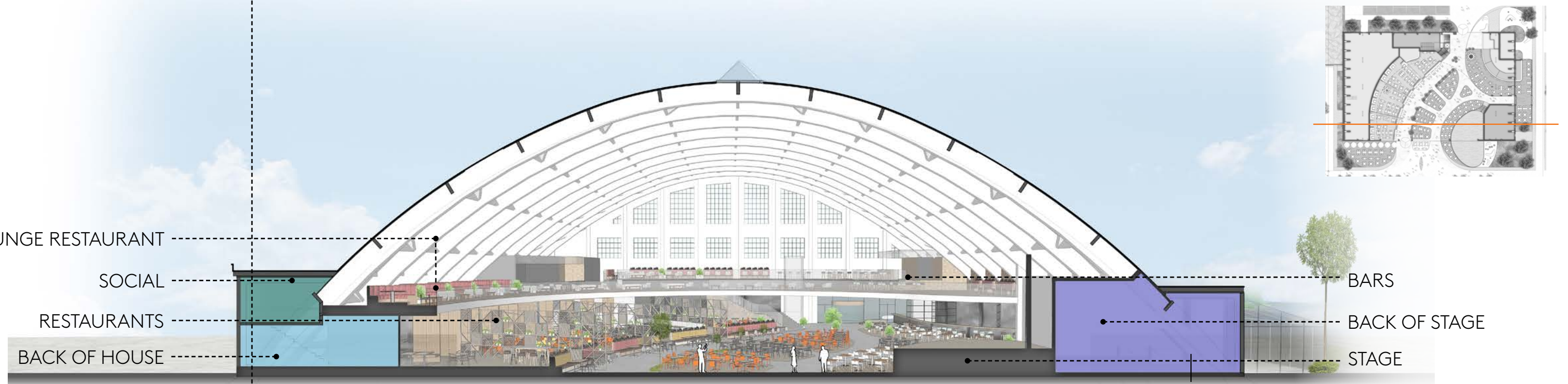
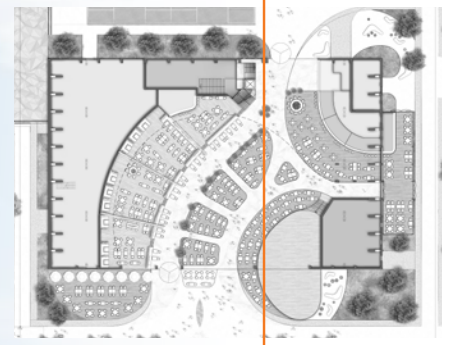
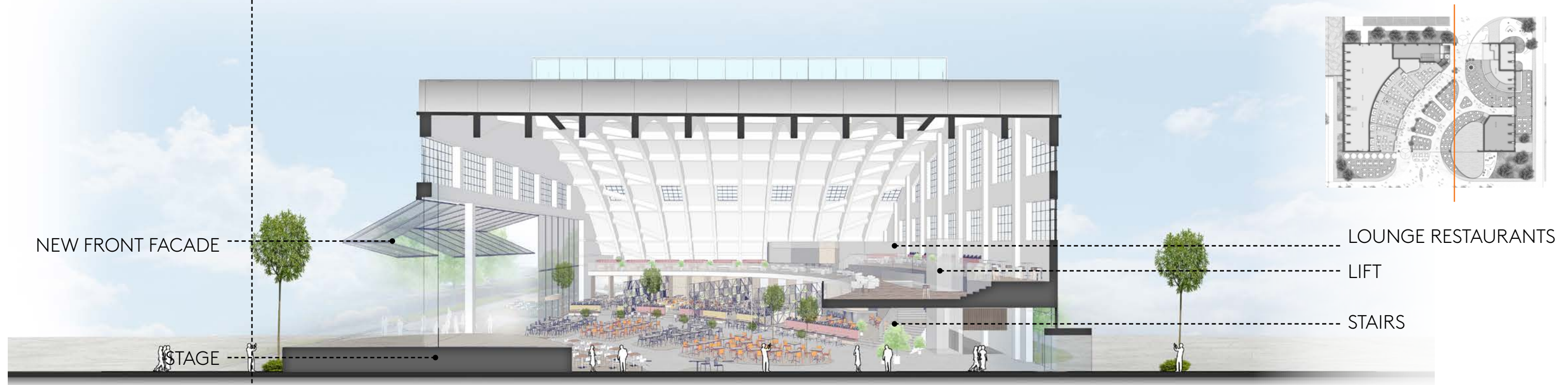


22/29



TOILETS

CORESI HANGAR | SECTION



BACK OF HOUSE RESTAURANTS RESTAURANTS SITTING AREA STAGE BACK OF STAGE

m
0 1 5 15
1:250@A3

CORESI HANGAR | KEY FIGURES



LEVEL 0

GLA = 451 M²



MEZZANINE LEVEL



LEVEL +1

GLA= 36 M²

FUNCTIONS	area (m ²)						TOTAL per FUNCTION	
	Level 0		mezzanie		Level +1			
GLA/GBA	GBA (m ²)	GLA (m ²)	GBA (m ²)	GLA (m ²)	GBA (m ²)	GLA (m ²)	GBA	GLA
Bar	72	72			52	52	124	124
Restaurant	471	471					471	471
Sitting area	423	423			420	420	843	843
Winter garden	121	121					121	121
Kitchen / BOH / tech.	643	547			61	52	704	598
BOS / Storage	150						150	0
Stage	110						110	0
Social			244	207			244	207
Cloakroom	24						24	0
Toilets	110		90		50		250	0
Communication	520		25		250		795	0
Technical / Trafo	53						53	0
TOTAL	2124	1633	359	207	583	524	3889	2365

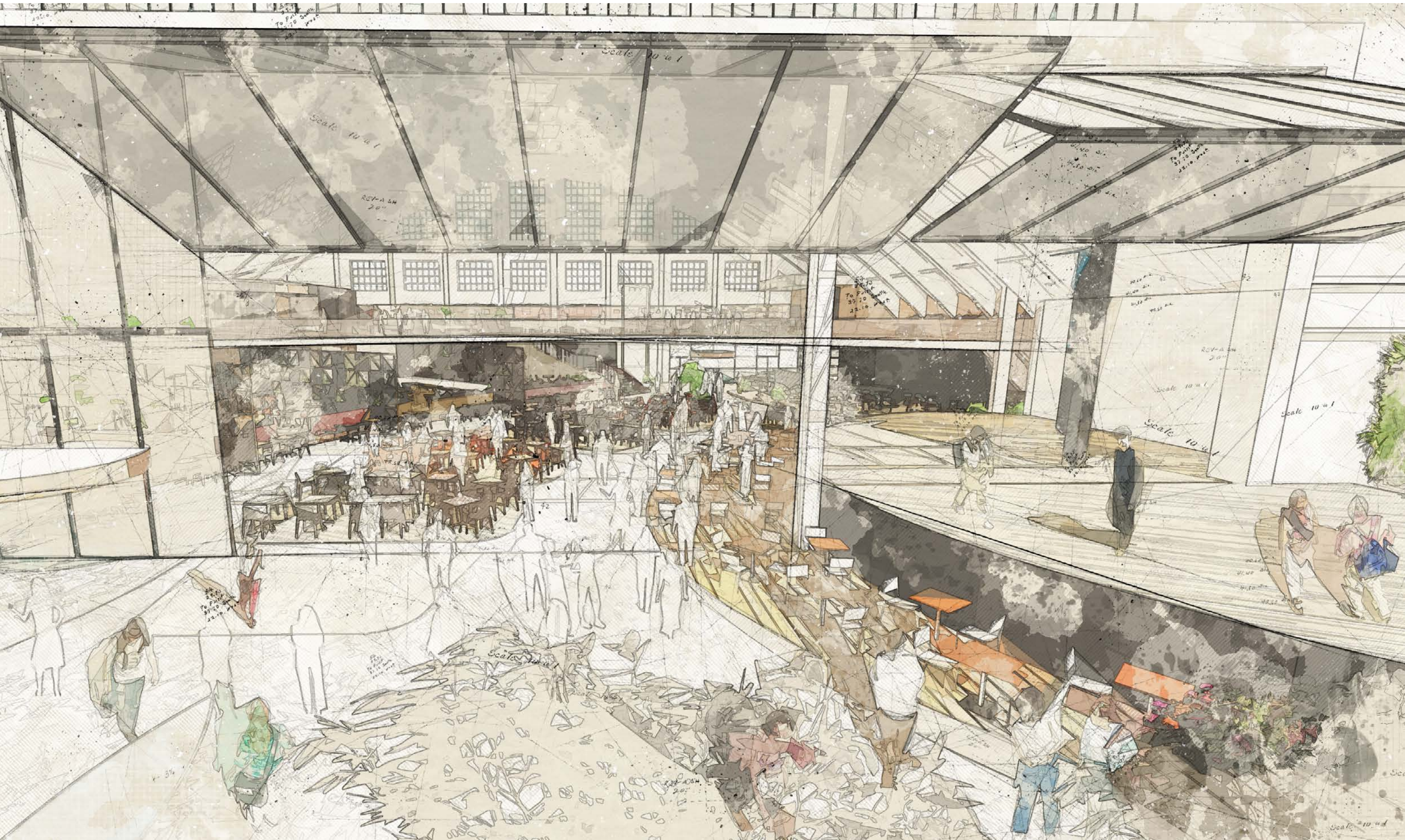
SITTING PLACES	
LEVEL 0	600
LEVEL +1	220
CONCERT	1000
TOTAL	820

TOILETS					
	WOMAN	MAN	DISABLED		TOTAL
1 TOILET	1/20				21
1 URINAL + 1 TOILET		1/30			14
1 TOILET			1/500		2
TOTAL					49

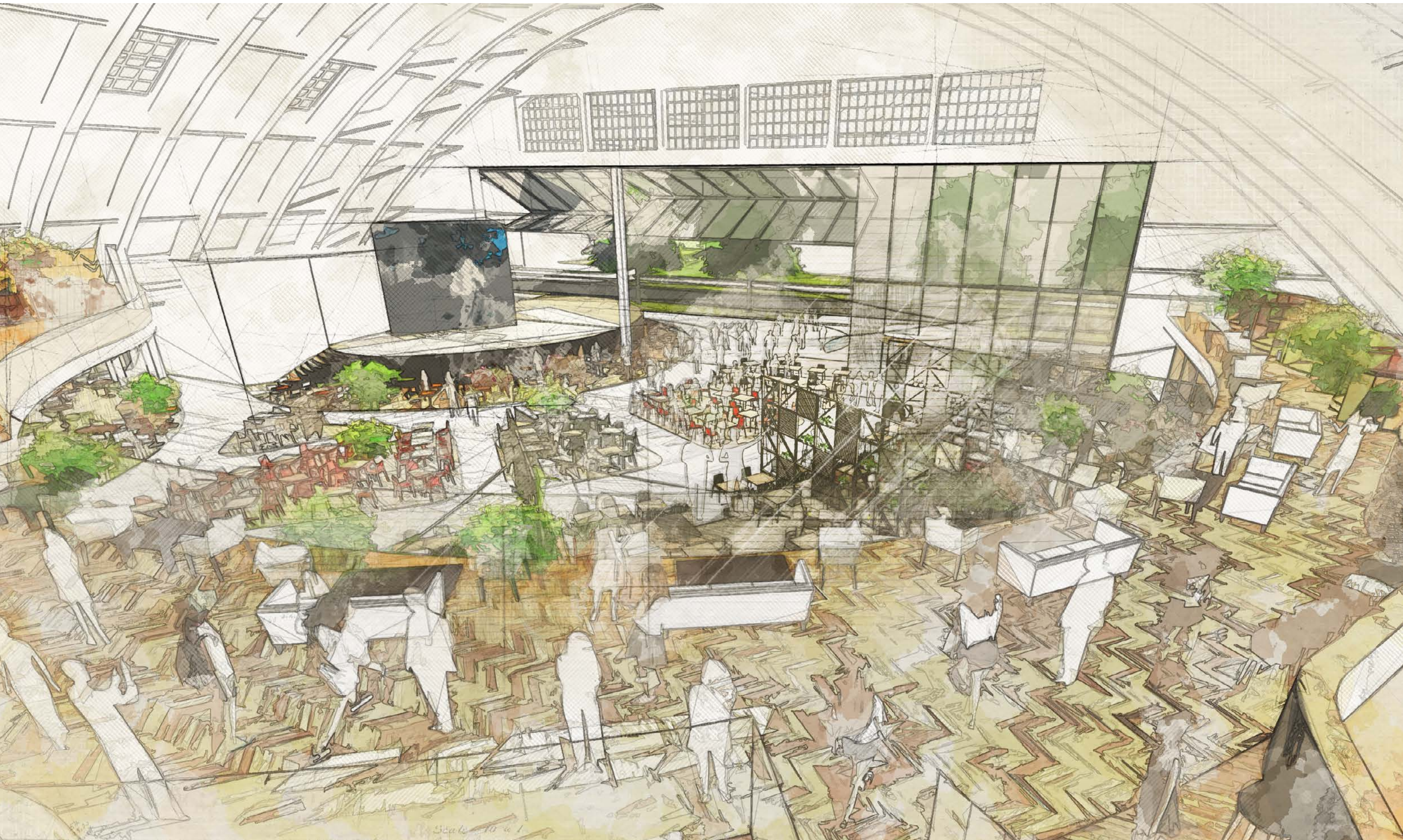
CORESI HANGAR | SKETCHES



CORESI HANGAR I SKETCHES



CORESI HANGAR | SKETCHES



CORESI HANGAR | SKETCHES





THANK YOU



Sud Architekt Polska Sp. z o.o.
Ul. Chmielna 25,
00-021 Warszawa, Polska
T: 00 48 22 55 65 900
F: 00 48 22 55 65 910
<http://www.sudarchitectes.pl>